

2019

ANNUAL REPORT



CAPI

guiding self-determination & social equality

TABLE OF CONTENTS

THANK YOU FROM THE CEO	3
LEADERSHIP	4
2019 IMPACT OVERVIEW	6
BASIC NEEDS	7
ECONOMIC EMPOWERMENT	8
CIVIC ENGAGEMENT	9
WHO WE SERVE	10
FY2019 FINANCIAL INFORMATION	11
VOLUNTEERS	12
DONORS	13



THANK YOU FROM THE CEO

EKTA PRAKASH



In 2019, a year after we established our Immigrant Opportunity Center in the Northwest Suburbs, CAPI continued to work toward the vision of providing increasingly accessible services to Hennepin County immigrants, refugees, and low-income US-born communities. These services have never been more important than they are at this unique moment in time.

Today, we are facing a grave global threat to our health and economic stability. As we have already seen, the coronavirus disproportionately impacts refugees, immigrants and communities of color. COVID-19 is fueling anti-Asian racism, xenophobia, and violence, and in the midst of it, we have been witness to global movements of fighting for justice and social equity in the wake of the horrific killing of George Floyd. As an immigrant-led organization that serves a diverse community, CAPI stands in solidarity, working towards equity, mobilizing, and advocating for the needs of the communities in the greater Twin Cities metro.

Looking into our near future, CAPI's strategies and investments are geared towards continuing to find ways to support the communities impacted by the coronavirus pandemic through providing basic needs, food, support to

our seniors, public benefit access assistance and enrollment, workforce development, financial empowerment services and civic participation.

We know the first six months of 2020 have been grueling for many non-profits and other businesses, but, our staff, board, volunteers, and funders have stepped up to the challenge. In times like these we have to stand together, support each other, and lift each other up. We truly believe in strong partnerships that will bring together an even stronger continuum of integrated programs.

I am proud to be a part of CAPI USA and am excited to share with you our 2019 accomplishments. On behalf of CAPI's Board of Directors and staff, I'd like to thank the many volunteers, donors, and partnering organizations, who supported our work in 2019. We look forward to finishing the year strong and continuing our mission for social equality and greater independence for all Minnesotans.

Ekta Prakash
CEO
CAPI USA

LEADERSHIP

CAPI USA | 04

2019 BOARD OF DIRECTORS



VINOTHINI AMBROSE

Board Chair

*Principal Consultant, The
Marcus Buckingham
Company*

MICHAEL THORSTEINSON

Vice Chair

*Retired Executive Director, Three
Rivers Community Action*

NKECHI ANYAMELE

Secretary

*Audit Manager,
Wells Fargo Bank NA*

ODUWA AGANMWONYI

*Mental Health
Practitioner/Director of
Client, Covenant Human
Services, LLC*

BETH ERICKSON

*Compliance Analyst,
Fraser*

LOUIZA KIRITOPOULOS

*Organizational Psychologist,
Executive and Leadership
Coach, Mediator/Conflict
Resolution*

MILT LIU

*CEO,
Stir Foods*

DANIELLE SELASSIE

Wells Fargo Bank NA

KRIS VINNIK

*Strategic Account
Director,
Taylor Communications*



2019 STAFF LEADERSHIP

EKTA PRAKASH

CEO

DAWN WAMBEKE

*Economic Empowerment
Director*

KRISTINA DOAN

*Human Services and Civic
Engagement Manager*

REBECCA GOLDEN

MFIP Program Manager

**ALEJANDRO
VALENZUELA**

*Financial Services
Manager*

**MOHAMMED
ARGIB**

*Career Pathways
Manager*

ALEXI KLEINSCHMIDT

Operations Manager



2019 IMPACT OVERVIEW

CAPI USA | 06

93%

OF INCOME IS
SPENT ON
PROGRAMMING

High level highlights

375,831 LBS

OF FOOD DISTRIBUTED

In 2019, CAPI distributed 375,830 lbs of food. 311,382 lbs were distributed through our food shelf, and 64,449 lbs were distributed through our annual fresh produce distribution. In total, we served 838 households.

300

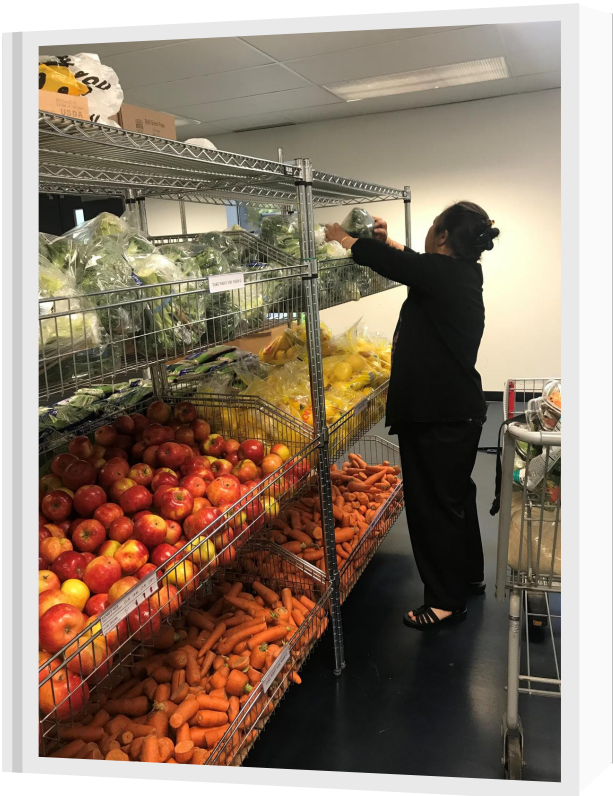
CLIENTS EMPLOYED

CAPI's Workforce Development staff helped 300 clients find work through job search services and training/certification programs.

7,306

PEOPLE SERVED

Overall, CAPI's dedicated staff supported 7,306 individuals through our programs in 2019.



TO MAKE A GIFT TODAY, VISIT [CAPIUSA.ORG](https://www.capiusa.org).



THE YEAR IN REVIEW: BASIC NEEDS

CAPI offers a culturally-specific client choice food shelf, provides access to community gardens, facilitates enrollment into the Supplemental Nutrition Assistance Program (SNAP) and other benefit programs, along with programming for Hmong seniors.



HIGHLIGHTS

- An average of **838** food insecure households received nutritious food each month from CAPI's client choice food shelf.
- Toys for Tots: 165 households (with **458** children) were served in CAPI's Toys for Tots distribution.
- **44** families participated in CAPI's Community Gardening Program.
- A total of **253** MNsure applications and renewals were completed ensuring clients would have healthcare.



CAPI's Benefits Enrollment Center (BEC) provides vital care and information to the immigrant and refugee community. A Hmong caregiver and food self client was receiving \$590.00 a month due to her early retirement. As a former refugee with a language barrier and a lack of knowledge about public assistance, she didn't understand why the Social Security Administration (SSA) was taking \$144.60 from her check. This only left her \$445.50 a month to pay for rent, prescriptions, food, and make utility payments--leaving her dependent upon her children to help with her monthly expenses. She didn't know where to turn for help.

The client attended a support group meeting at CAPI where she heard from CAPI's Benefits Enrollment Advocate. After assuring her that we could find help for her, she opened up about her problem and how stressed she had been. The Advocate took her to the SSA where they learned that the money was being taken from her check to pay for her Medicare part B premium. The Advocate helped her fill out applications for the Medicare Savings Program and the Social Security Supplemental benefit. She was approved and now has more funds to pay for her expenses and is happier.

THE YEAR IN REVIEW: ECONOMIC EMPOWERMENT

CAPI USA | 08

"I will never be a public charge." Joseph Olusegun is a 58-year-old man from Nigeria. He migrated to the USA 3 years ago looking for further medical aid and a better opportunity.

While he was in Nigeria, he was involved in a car accident in which he lost the use of his left limb. But the accident never stopped Joseph from dreaming big of having a job and changing his life in the US. Joseph is a proud and courageous man. He did not want to take any government assistance.

When he came to CAPI, he was unemployed. A friend told Joseph about CAPI's free hand soldering training to the community. Joseph enrolled and completed the training successfully earning his IPC-J and IPC-A certification on May 17th, 2019. Now, Joseph can work as a professional Hand Solder.

HIGHLIGHTS

- In 2019, CAPI's career development programs (MFIP, Refugee Employment Services, and Career Pathways) served **671** individuals.
- **300** people secured or maintained employment. Averaging a wage of \$13.50 an hour.
- **127** individuals were placed in training of which **45** received credentials/certificates.
- Through CAPI's wealth building services, **260** participants received free VITA (Volunteer Income Tax Assistance) services. The tax services were facilitated by VITA volunteers in partnership with CLUES.

CAPI's career development program and wealth building services help individuals secure sustainable career pathways via certificate and credential training, job placement, and wealth building support services such as free tax preparation clinics and financial literacy.



TO MAKE A GIFT TODAY, VISIT [CAPIUSA.ORG](https://www.capiusa.org).

THE YEAR IN REVIEW: CIVIC ENGAGEMENT

CAPI USA | 09

CAPI engages, encourages and empowers Minnesota's newest immigrants and refugees to problem-solve and make decisions on issues that matter to them.

HIGHLIGHTS

- **812** voter registrations
- **4,595** pledges

CAPI hosted the July 15 Twin Cities World Refugee Day held at Loring Park in Minneapolis.

- **3,500+** refugees and allies were in attendance.
- **40** organizations had booths at this event and more than 70 volunteers participated.

In 2019, CAPI (a Coulter co-convenor with Asian American Organizing Project) continued to co-lead the Ignite Minnesota Asian Power (IMAP) coalition which consists of CAPI's 7 sub-grantees, AAOP, and AAOP's sub-granted partners.

CAPI held its first pilot 13-week Citizenship Class. The classes were held onsite at CAPI's Immigrant Opportunity Center. Classes were taught and organized by CAPI's Civic Engagement Coordinator using curriculum from the United States Citizenship and Immigration Services (USCIS).

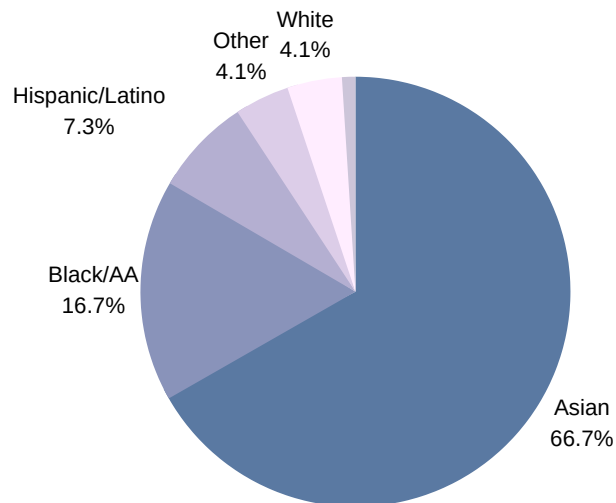
One of the areas that CAPI's civic engagement and leadership team discussed throughout the year was how to continually integrate civic engagement in existing social services programming. In 2019, CAPI's civic engagement team provided several in-service training to staff on the 2020 census. CAPI's Civic Engagement Manager, Kristina Doan, was appointed to the Minneapolis Complete Count Committee to represent Ward 10 in Minneapolis and share with the committee CAPI's work around the census. This committee is working to ensure all Minneapolis residents are counted in the census and CAPI is working with the City's neighborhood and cultural liaisons to reach undercounted communities.



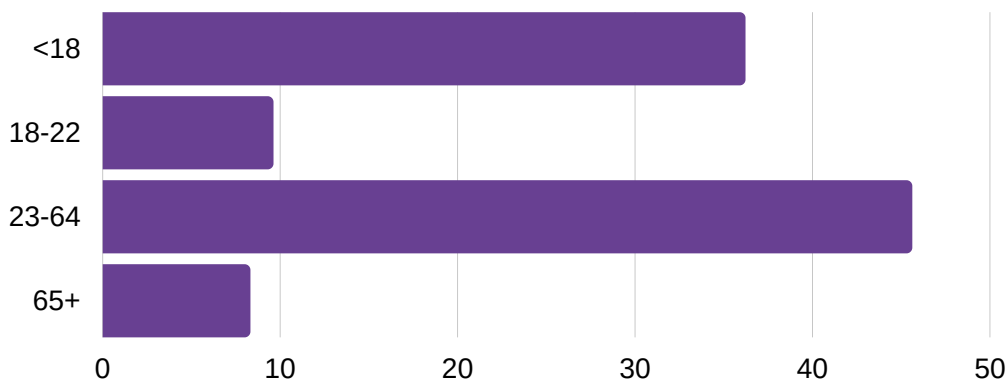
WHO WE SERVE

In 2019, CAPI's staff and volunteers served more than 7,000 people.

ETHNICITY



AGE



79.5%

IMMIGRANT/
REFUGEE

90.2%

LIVE AT OR BELOW
THE FEDERAL
POVERTY
GUIDELINES

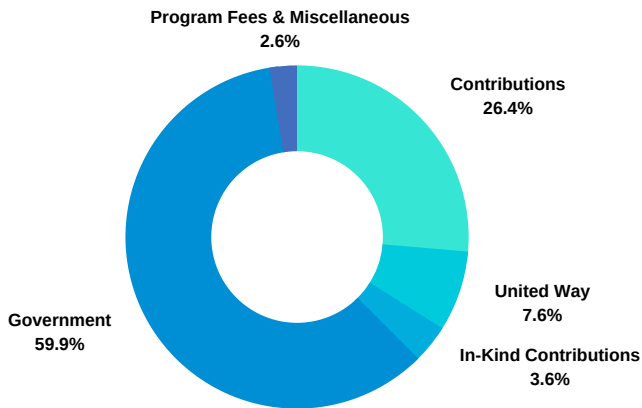
95.7%

LIVE IN
HENNEPIN
COUNTY

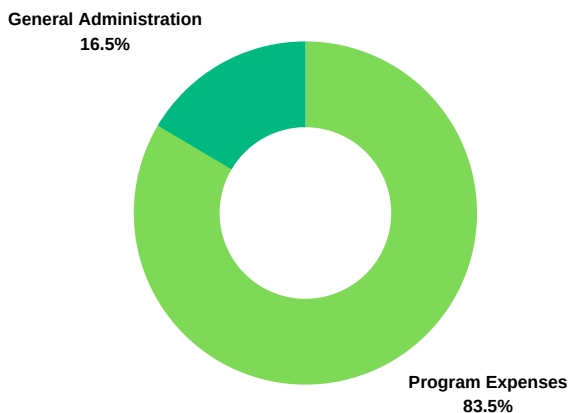
FY2019 FINANCIALS



Revenue



Expenses



Balance Sheet: January 1 to December 31, 2019

Assets

Cash and cash equivalents.....	\$657,637
Accounts receivable.....	\$229,955
Pledges receivable.....	\$465,000
Prepaid expenses.....	\$28,032
Fixed assets less accumulated expenses...	\$2,935,650
Long term investments.....	\$10,675
TOTAL ASSETS.....	\$4,326,949

LIABILITIES

Accounts payable.....	\$64,664
Accrued and withheld payroll.....	\$72,748
Notes payable.....	\$811,960
Other current liabilities.....	\$8,567
TOTAL LIABILITIES.....	\$957,939

NET ASSETS

Without donor restrictions.....	\$83,018
With donor restrictions.....	\$3,285,992
TOTAL NET ASSETS.....	\$3,369,010

Total Liabilities and Net Assets..... \$4,326,949

Immigrant Opportunity Center Capital Campaign Status:

As of December 2019, CAPI has raised \$1,025,000 and is at 52% of its \$1.95 million capital campaign goal. **Thank you** to the following contributors: The McKnight Foundation, Newman Family Foundation, Otto Bremer Foundation, Marbrook Foundation, Wells Fargo Foundation, Thrivent Foundation, Burdick Family Fund of the Minneapolis Foundation, United Way of the Twin Cities, and individuals.

TO MAKE A GIFT TODAY, VISIT CAPIUSA.ORG.

VOLUNTEERS

We are grateful for the time and energy that our volunteers dedicate to CAPI.

Individuals

Audrey Alkinson
 Cara Al-Mutawa
 Loveth Amas
 Vinothini Ambrose
 Thomas August
 Dee Barrett
 Eugene Bellin
 Ellisun Benedict
 Taycila Brandon
 Jenal Brant
 James Bremer
 Karen Bros
 Ben Campbell
 Jamie Chai
 Kristin Chu
 Liz Connolly
 Tim Connolly
 Heather Craig
 Bionca Davis
 Briana Davis
 Sonja Degra
 Gina DiMaggio
 Jenny Doan
 Tony Doan
 Amanda Eldridge
 Brett Eslinger
 Renee Farrow
 Andrea Frank
 Rachel Ganz
 Jesse Green
 Pam Grossmann
 Dennis Grotts
 Francisco Guzman
 Chris Gwinn
 Rob Haarsager
 Farzana Hanif
 Charmaine Harlin
 Scott Heilman
 Justin Heore
 Vanessa Herrera
 Sarah Hill
 Ryan Hoffman
 Lynette Hohenstein

Michelle Howk
 Toni Ikeji
 Halimo Ismail
 Aryaa Kayastha
 Katina Kellum
 Raha Khan
 Don Kim
 Jamie Kissler
 Tina Kraemer
 Taylor Krahn
 Cayleigh Kuntz
 Jennie Lecocq
 Keila Lopez
 Dylan Lutz
 Pat Madsen
 Gargi Mansingh
 Laura Martin
 Stacia Martin
 Beatriz Martinez
 Stacy Martinez
 Molly McCaffrey
 Kelly McCollow
 Josh McCulloch
 Michael McGill
 Jillian Millares
 Uyen Nguyen
 Marlys Ousky
 Ron Ousky
 Jessica Pacello
 Liz Parker
 Malina Pech
 Erik Peterson
 Sneha Presad
 Anna Prescher
 Beth Price
 Prosper Princewill
 Brittany Rasmussen
 Scott Reid
 Molly Rowan
 Ernesto Ruiz
 Sofia Sanches
 Alejandra Sanchez
 Christie Sauice
 Matt Schafer
 Arman Shahriar
 Joy Shelby

Alyana Simpron
 Katherine Sinsky
 Mary Slatten
 Carolyn Sleeth
 Stephanie Sommers
 Nicky Stein-Grotts
 Lisa Steinmeyer
 Susan Tansche
 Maddy Taylor
 Khou Thao
 Megan Tong
 Anne Tremel
 Lai Lee Tung
 Sravani Vemireddy
 Elizabeth Wallin
 Vicki Willcouk
 Sue Wolfe
 Lee Yang
 Vivian Yang
 Kaitlin Yoder-Henley
 Wendy Zeuli



Groups

The Arc of the Covenant Church
 Crowdstrike Inc.
 Elegant Women of Minnesota
 The Marcus Buckingham Company
 Medica
 Medtronic
 Next Acts
 Target
 University of St. Thomas

THANK YOU!

DONORS

Contracts, Corporations, Foundations, Other Partners

\$500,000 +

Hennepin County

\$250,000-\$499,999

Greater Twin Cities United Way
MN Dept of Employment & Economic
Development (DEED)
Wallace H. Coulter Foundation

\$100,000-249,999

MN Sure
Otto Bremer Foundation*
Target Foundation*

\$50,000-\$99,999

Marbrook Foundation*
McKnight Foundation
Minneapolis Foundation
Twin Cities LISC

\$25,000-\$49,999

General Mills Foundation
HIRED
Local Initiatives Support Corporation
Metropolitan Area Agency on Aging
National Council on Aging

\$10,000-\$24,999

Carolyn Foundation
CDBG
Marbrook Foundation
National CAPACD
Seward Co-op

Stevens Square Foundation
Target Foundation
Wells Fargo Foundation

\$1,000-\$9,999

Allina Health System
Ameriprise Financial
Amherst H. Wilder Foundation
Burdick Family Fund of The Minneapolis Foundation*
Grassroots Solutions, Inc.
Health Partners
James Thorpe Foundation
Karen Organization of Minnesota
Marathon Petroleum Corporation
Medica Foundation
Metropolitan Regional Arts Council
MN Finance Housing Agency
Northwest Indian Community Development Center
Open Your Heart to the Hungry and Homeless
Richard M. Schulze Family Foundation
United Natural Foods, Inc.
Wells Fargo Bank

>\$1,000

Asian-American Student Union
The Blake School
Blue Wolf Brewing
Bremer Bank
City of Brooklyn Park
FedEX
Food For All
GMCC-Minnestoa FoodShare
Hmong American Partnership
Office Depot
SEWA-AIFW
Stoos-Tysver Family Charitable Fund
Sustainable Resources Center, Inc.
United Way of Milwaukee and Greater Waukesha County

Individuals

Vinothini Ambrose
Elaine Chinquist
Ellen Chirhart
Corey James Dahlstrand
John Eaton
Melissa Engels
David Farrar
Valerie Land
Carolyn Robinson
Laura Thomes
Mike Thorsteinson
Ekta Prakash
Jeff Uecker

*=includes capital campaign
contribution

Publishing an annual list of donors invites potential for both human and computer error. CAPI makes every effort to list donors accurately. Should an error occur on your listing, please contact Monique Hernandez by email at monique.hernandez@capiusa.org. Thank you!

TO MAKE A GIFT TODAY, VISIT CAPIUSA.ORG.



JOIN OUR COMMUNITY TODAY

Be a part of someone's journey and impact their future!

Give

CAPI relies on the generous support of individuals, corporations, and foundations to provide our services free of charge. Your gift allows us to provide life-changing resources to those who need it most.

Visit capiusa.org/donate

Volunteer

CAPI has individual and group volunteer projects throughout the year, with ongoing needs in our food shelf. Help with our produce distributions, take a shift at Twin Cities World Refugee Day, or help individuals connect with local initiatives through our civic engagement work. Find a spot that's right for you!

Visit capiusa.org/volunteer

Follow



Facebook: @CAPIUSA1982

Instagram: @capi.usa



CAPI

guiding self-determination & social equality

CAPI IOC

5930 Brooklyn Blvd.

Brooklyn Center, MN 55429

612-721-0122

www.capiusa.org

